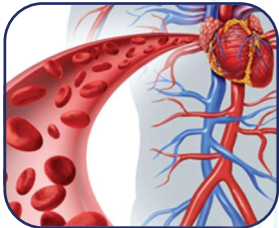


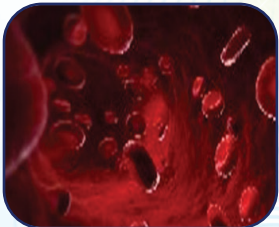
5 MAIN FUNCTIONS OF iTera-Bio Lite



Dispels Cold & Dampness
Promotes a healthy response and aids in recovery.



Metabolism Support
Enhances metabolism, refines body contours, provides a streamlined appearance, and promotes a slimmer look.



Supports Body Cleanliness
Boosts blood flow and metabolic activity, assisting in the removal of toxins and unwanted substances from the body.



Far-Infrared Ray
Quickly warms the skin, supporting blood circulation and metabolic functions.



Beauty & Anti-Aging
Supports youthful-looking skin and enhances skin vibrancy.



A Giant Step To Gain New Health

Step onto iTera-Bio Lite daily to expel cold and dampness, promoting relaxation.

Suggestion: Twice a day, 30 minutes each session, with a maximum of 2 times per day. Maintain a 4-hour interval between sessions.

Who needs it most?

- Those with cold & dampness body conditions
- Office workers
- Postpartum mothers
- Obese individuals
- Beauty enthusiasts
- Middle-aged and elderly people
- Those sitting or standing for extended periods
- Individuals with hypertension, high cholesterol, and high blood sugar

Suitable for

- Home care
- Wellness Centers
- Beauty Salons
- SPA Centers
- Rehabilitation Centers
- Community Centers
- Offices



DISCLAIMER:

iTera-Bio Lite is not a medical device. The manufacturer does not assert its ability to treat or cure any medical conditions. Consult your medical professional for advice on any health concerns.

iTera-Bio Lite

Safeguarding Your Health,
Starting with Your Feet.



Human feet, known as the "second heart" of the body, house meridian points corresponding to various organs. The soles of the feet are the most direct channel for energy absorption.

WORLD LEADING **3+1** CORE TECHNOLOGIES



TERAHERTZ

Terahertz refers to electromagnetic waves between infrared and microwave. It is also called "Ray of Life", and refers to electromagnetic waves with a wavelength between 3mm and 30µm. Terahertz resonates with human cells, benefiting bodily functions and supporting overall health.



SINUSOIDAL ENERGY

Sinusoidal energy resonates with the human body at the same frequency. It promotes cell function optimally by boosting cellular vitality, generates body heat, regulates microcirculation, enhances the quality of sleep, accelerates metabolism, invigorates and rejuvenates for youthful appearance.



GRAPHENE RAY

Graphene can emit 100% far-infrared and possesses the unique ability to penetrate up to 3-4 cm below the skin's surface, facilitating deep absorption by tissues. Far infrared ray enhances blood flow, promotes relaxation, and relieves tension.



PULSED ELECTROMAGNETIC FIELD (PEMF)

PEMF therapy provides a dynamic charge to our 100 trillion cells, acting as a catalyst to stimulate and exercise cells. This process aids in resolving cellular dysfunction and contributes to overall wellness.

iTera-Bio Lite High-End Technology

With 5 Unique Patents

01

ERGONOMICS

Revolutionary healthcare device with ergonomic design for wellness and a unique lifestyle.

02

HIGH QUALITY & SUPERB WATERPROOF

Waterproof foot therapy device ensuring safety and dryness.

03

STRONG SUPPORT

Breakthrough healthy device with a stable physical support design.

04

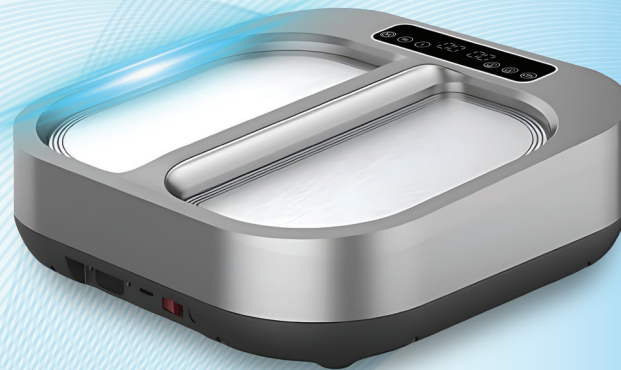
GRAPHENE HEATING TECHNOLOGY

Foot therapy equipment with graphene heating technology for warmth and health.

05

SAFETY

Micro-current foot therapy device with good insulation performance, ensuring safe use and foot protection.



Best choice for family Experience healthy lifestyle

10 Intensity Level Design

Adjustable intensity levels for comfort and individual needs.

In-Mold-Design

Advanced technology design, elegant and durable.



Self-Start Detection



Breakpoint memory for easy and safe use.

